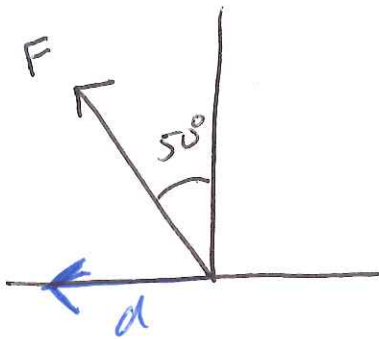


## Appendix J2

#5] Step 1 draw a picture.



$$d = \langle -4, 0 \rangle$$

$$F = \langle -20 \sin 50^\circ, 20 \cos 50^\circ \rangle$$

OR

$$F = \langle -20 \cos 40^\circ, 20 \sin 40^\circ \rangle$$

$$W = F \cdot d$$

$$= -4(-20 \cos 40^\circ) + 0(20 \sin 40^\circ)$$

$$= 80 \cos 40^\circ \quad (\text{exact answer})$$

$$= 61.2836 \text{ ft. lbs.}$$