
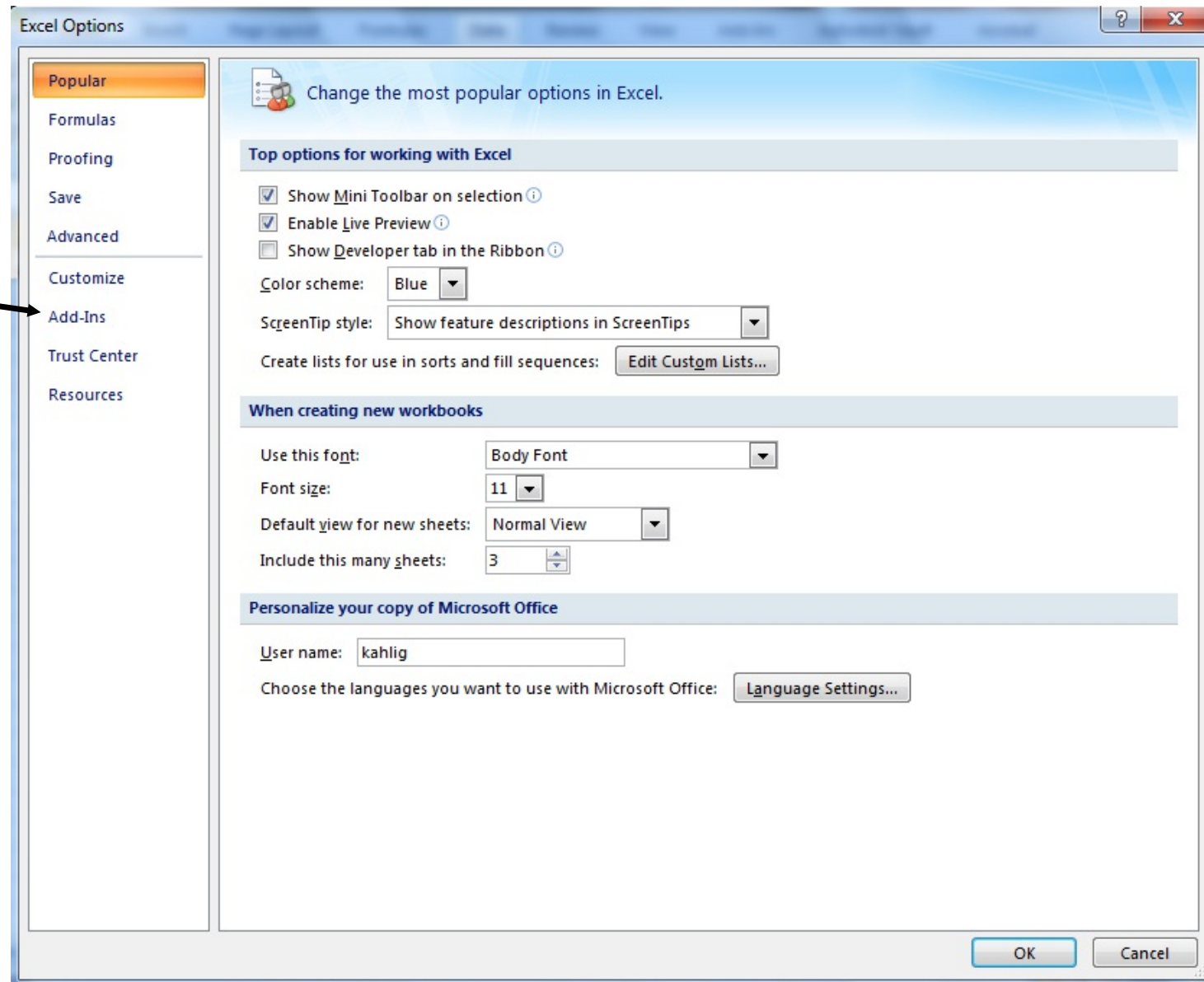
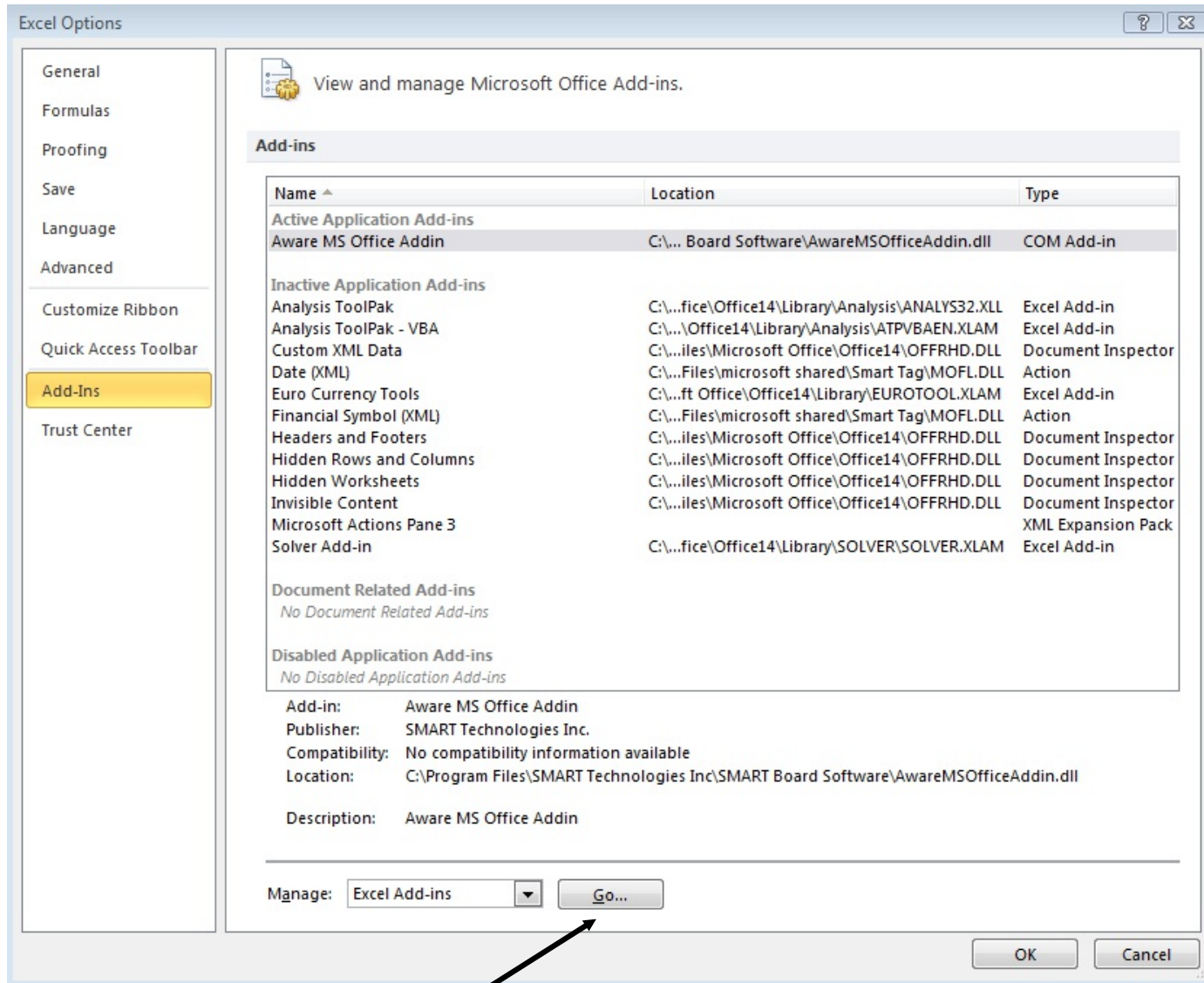


To use the Solver Add-in, however, you first need to load it in Excel.

1.  Click on the File tab and then click Options.
2. Click **Add-Ins**, and then in the **Manage** box, select **Excel Add-ins**.
3. Click **Go**.
4. In the **Add-Ins available** box, select the **Solver Add-in** check box, and then click **OK**.
 1. **Tip** If **Solver Add-in** is not listed in the **Add-Ins available** box, click **Browse** to locate the add-in.
 2. If you get prompted that the Solver Add-in is not currently installed on your computer, click **Yes** to install it.
5. After you load the Solver Add-in, the **Solver** command is available in the **Analysis** group on the **Data** tab.

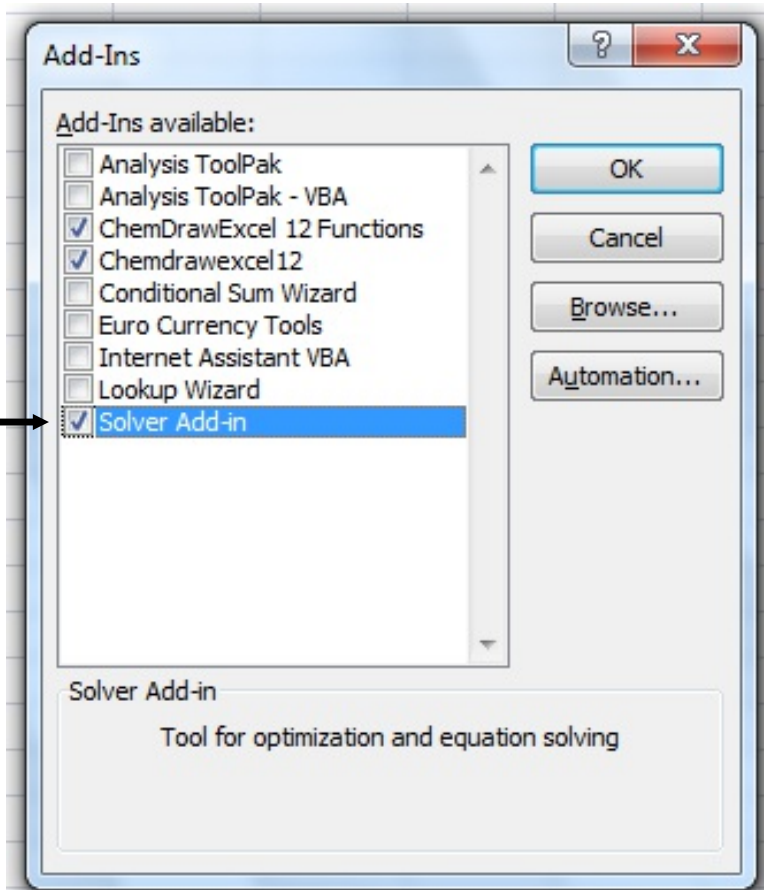


select
Add-Ins



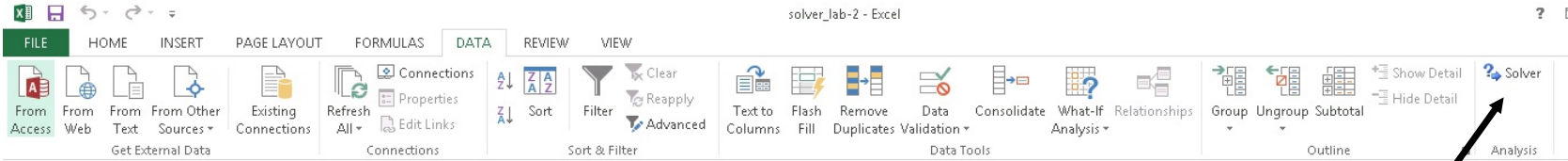
click here

make sure this option is checked.



The list of Add-Ins on your computer may be different.

new version of excell.



Solver command

old version of excell.

